

AMERICAN RIVER COMMON FEATURES

WRDA 16

SACRAMENTO WEIR WIDENING

Environmental Impact Statement Scoping Meeting

April 2020



US Army Corps
of Engineers®



Sacramento Weir 2017



NEPA SCOPING MEETING



- Overview of Project Purpose and Context for Regional Flood Management
- Summary of Project Description
- Overview of NEPA process and Supplemental EIS/EIR contents
- Summary of Project Schedule and Opportunities for Public Input



AMERICAN RIVER COMMON FEATURES



- Authorized by Congress for construction in Water Resources Development Act of 2016 (WRDA 16).
- ARCF WRDA 16 project is funded by the Emergency Supplemental Appropriations in the Bipartisan Budget Act of 2018.
- Corps is Federal lead agency, CVFPB is state lead agency. Local partners also include DWR and SAFCA.
- Sacramento Weir is operated by DWR. Bypass is managed by CDFW.

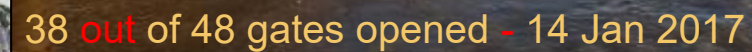




SACRAMENTO WEIR WIDENING



- Together with DWR's Lower Elkhorn Basin Levee Setback (LEBLS) Project, the Project would widen Sacramento Weir and expand Sacramento Bypass to reduce regional flood risk.
- New fish passage structure would avoid stranding Federal and state-listed species in the Sacramento and Yolo Bypasses after flood events.
- New fixed weir would match frequency of Fremont Weir inundation of the Yolo and Sacramento Bypasses.

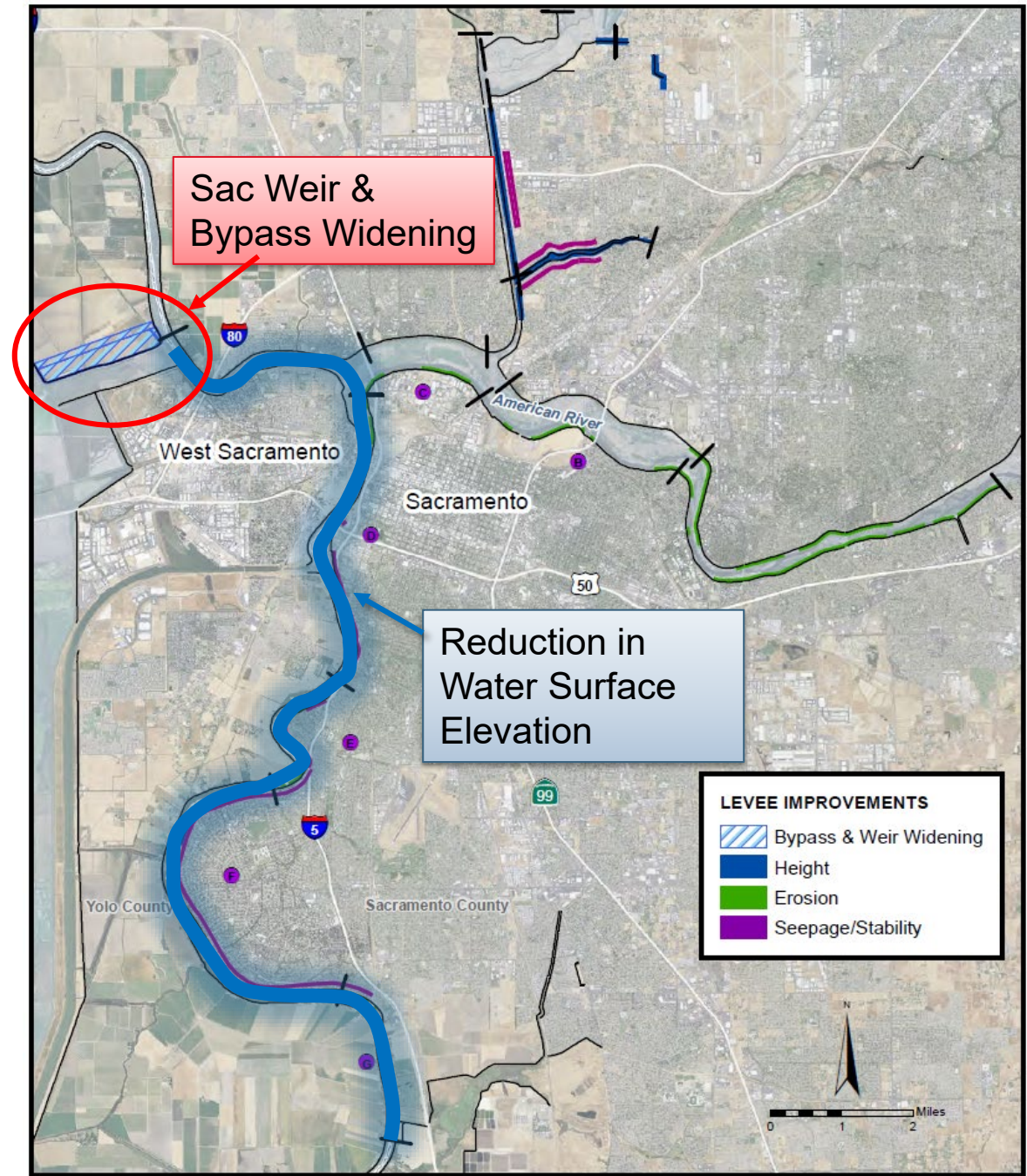




PERFORMANCE ASSUMPTIONS

- Reduce flood stage in Sacramento River by 1 foot between the Sacramento Weir and Freeport for the 1/200 ACE* flood
- Reduces flood stages in the Sacramento River for a full range of events (1/10 ACE – 1/200 ACE)
- Reducing flood stage reduces the need for levee raises in certain urban areas

Note: *Annual Chance of Exceedance





DESCRIPTION OF THE PROJECT



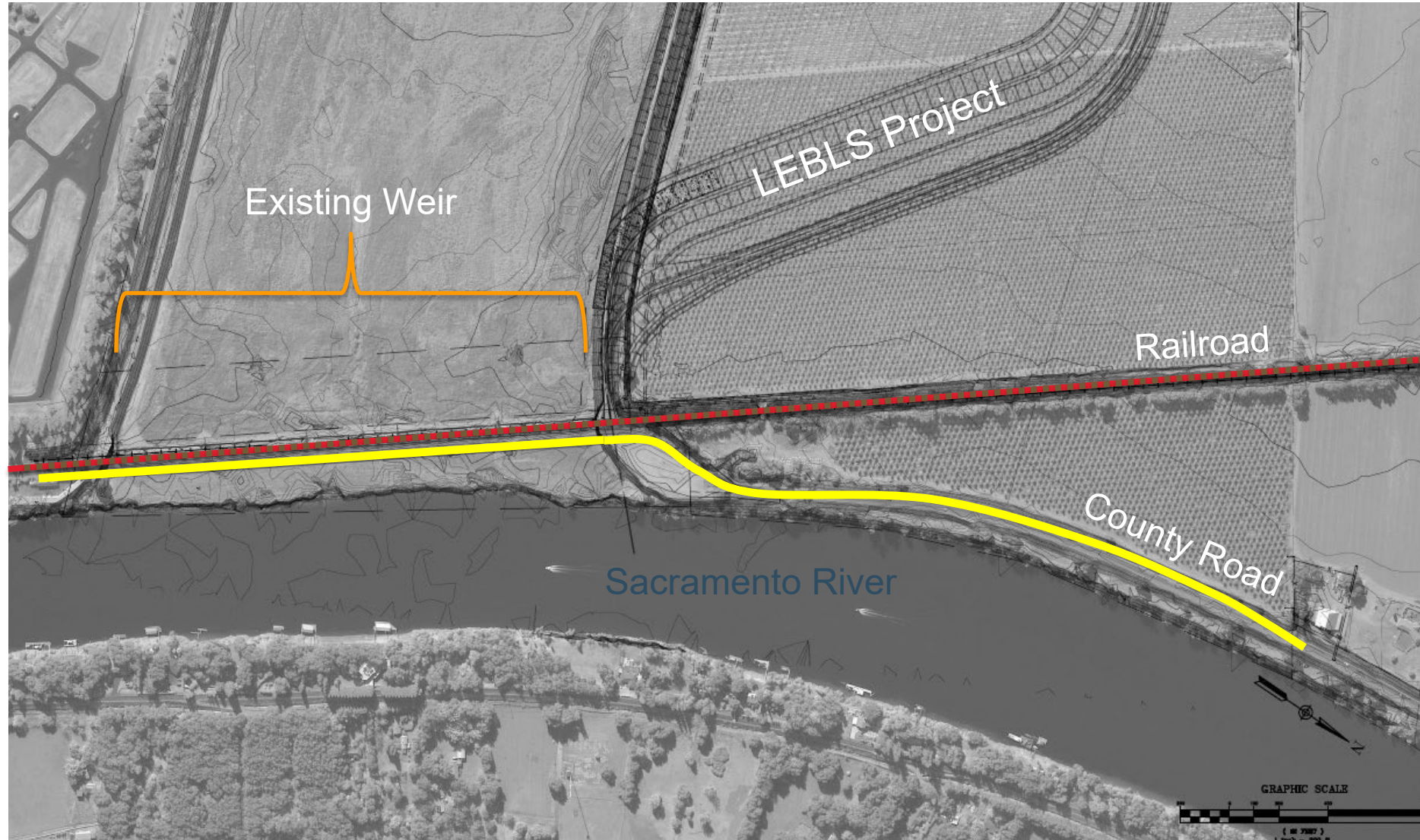
- Widen Sacramento Weir & Bypass by 1,500 to reduce water surface elevation in the Sacramento River
- Construction of the new weir would not impact operation of the old weir
- Existing infrastructure would be relocated and reconstructed (roads, canals, pumping stations)





SACRAMENTO WEIR WIDENING EXISTING CONDITIONS

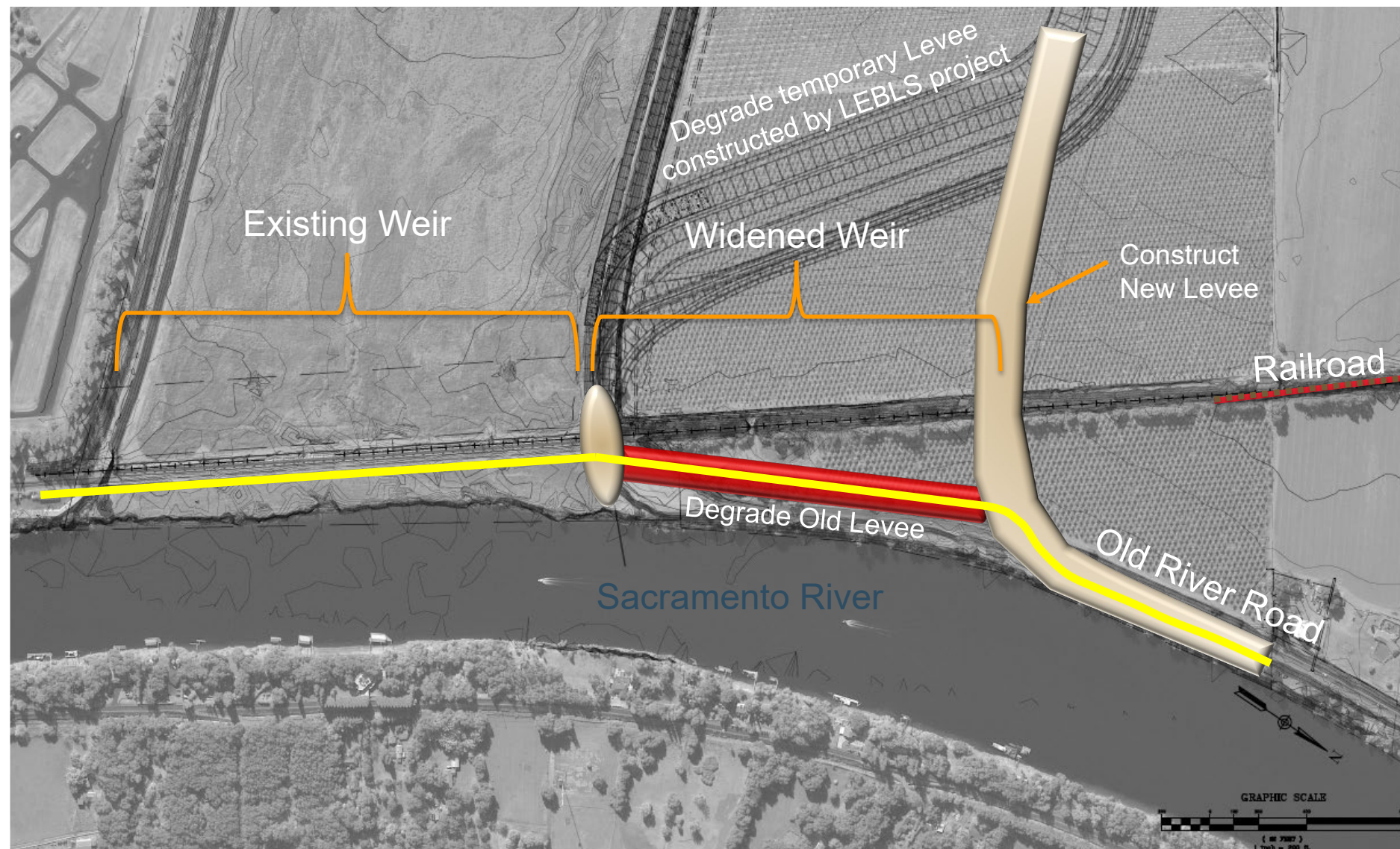
8





SACRAMENTO WEIR WIDENING CONCEPTUAL DESIGN

9





SACRAMENTO WEIR WIDENING FISH PASSAGE



- ARCF GRR Biological Opinion (BiOp) requires compensation for possible increased fish stranding by including adult fish passage facility associated with flood operations
- Conceptual design:
 - double gated structure and
 - channel connecting Sacramento River to Tule Canal and Yolo Bypass
- Fish passage facility designed by local and regional experts, including state, county, and Federal agencies
- Fish passage is a specific mitigation feature:
 - opens during flood stage events
 - alleviates fish stranding within the new bypass and provides passage between Yolo Bypass and Sacramento River





SACRAMENTO WEIR WIDENING SUPPLEMENTAL EIS/EIR



- ARCF GRR Final EIS/EIR completed in 2016
- USACE is preparing a Supplement to the ARCF GRR EIS/EIR to address project refinements from detailed design
- Analysis would focus on changes from original project description
- Updates would address the following topic areas:
 - Geological Resources
 - Land Use
 - Hydrology and Hydraulics
 - Water Quality & Groundwater
 - Vegetation and Wildlife
 - Fisheries
 - Special-Status Species
 - Cultural Resources
 - Transportation
 - Air Quality
 - Climate Change
 - Noise
 - Recreation
 - Visual Resources
 - Utilities
 - Hazardous Wastes & Materials



SACRAMENTO WEIR WIDENING SUPPLEMENTAL EIS/EIR



- Two project alternatives:
 - Fixed Weir at 26 foot elevation
 - Fixed Weir at 29.2 foot elevation (same as top of needle gates on existing weir)
- Key analyses:
 - Widened weir would flow more often. Potential downstream effects on stage (in Yolo Bypass and Sacramento River) and frequency of Bypass inundation evaluated based on historical record from 1970-present
 - Effects on fish from construction and operation of weir and fish passage structure
 - Effects on agricultural resources and overlap with Lower Elkhorn levee setback



SACRAMENTO WEIR WIDENING

NEPA PUBLIC PROCESS



- During Meeting: Scoping Comments and questions may be communicated verbally on the phone or via chat function in WebEx
- After meeting, comments may be provided to Robert Chase,
Robert.D.Chase@usace.army.mil
 - Electronic comments are requested. USACE staff are working remotely to reduce coronavirus transmission potential.
 - Please refer to www.sacleveeupgrades.com for additional communication options.
- Next Steps:
 - May-June 2020: Draft Supplemental EIS/EIR Public Review
 - October 2020: Final Supplemental EIS/EIR Public Review



SACRAMENTO WEIR WIDENING QUESTIONS AND COMMENTS



- Questions or comments may be added in the WebEx “chat” function
- You can also press *6 to unmute your telephone line for a verbal question or comment.
- Please remember that you can provide comments or questions via email to Robert Chase at Robert.D.Chase@usace.army.mil, including during this meeting.
- Thank you for your participation and flexibility. Stay home and stay healthy!